



MIDAS


# HOW TO PUSHLOCK

The Complete Guide

Midas is built on the vision that less  
can be more and simple is classic.  
Fall in love all over again with our  
new, elevated take on the basics.

M I D A S





## BUILD A ONE-OF-A-KIND LOOK IN 3 STEPS

### STEP 1



Choose  
your chain.

### STEP 2



Choose  
your pushlock

### STEP 3




Choose  
your charms

*For inspiration, we've put together some of our favorite looks.*

*Follow a step-by-step guide to recreate each one.*

*Be sure to share how you styled your pushlock looks*

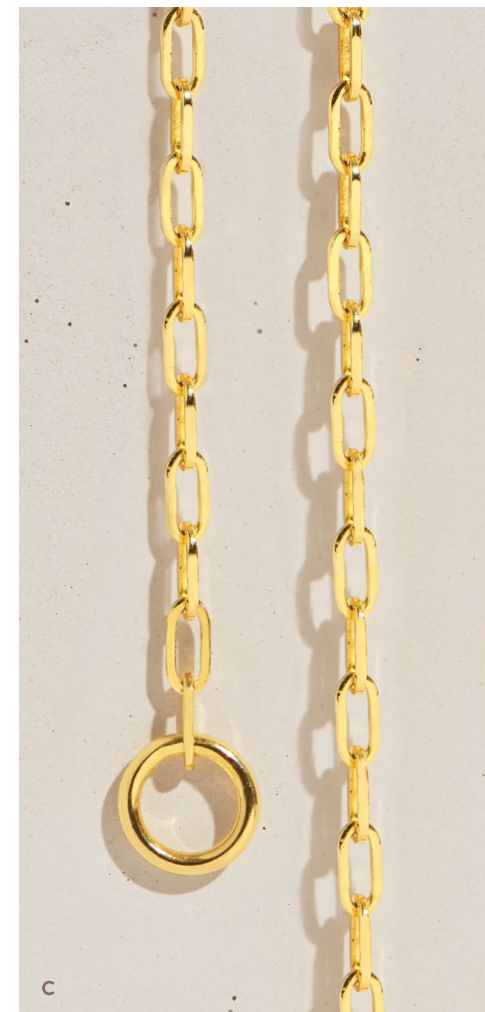
*@midaschain on Instagram! *



STEP 1

## CHOOSE YOUR CHAIN —→

A split chain with oversized jump rings will serve as the foundation for your design.



A Paperclip Split Chain MF037792-14Y 5mm 20" \$1,905 | B Paperclip Split Chain MZ011084-14Y 3.60mm 20" \$1,065  
C Paperclip Split Chain MZ011106-14Y 2.5mm 20" \$1,185 | D Rolo Split Chain MF037790-14Y 3.80mm 20" \$1,560



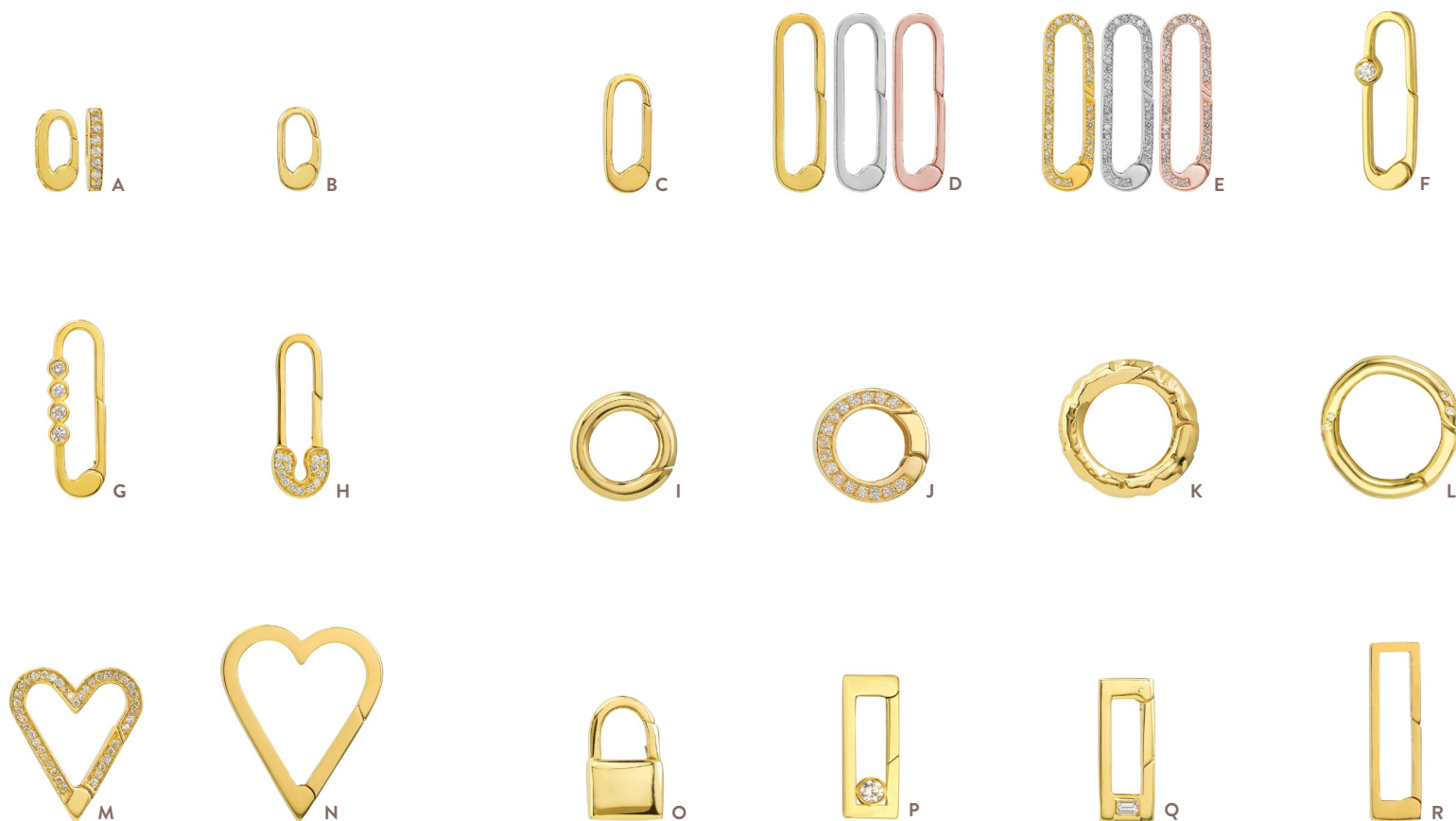




STEP 2

## CHOOSE A PUSH LOCK →

Whether mini or maxi, build onto your chain with a style that speaks to you.



A Pave Diamond Mini Push Lock TM022683-14Y 11mm \$420 | B Mini Polished Push Lock TM022667-14Y 11mm \$150  
C Medium Polished Push Lock TM022614-14Y 16mm \$207 | D Large Polished Push Lock TM022615-14Y 25mm \$411  
E Large Pave Diamond Push Lock TM022612-14Y 25mm \$1,155 | F Single Diamond Bezel Push Lock TM022693-14Y 25mm \$675 | G Four Diamond Bezel Push Lock TM022613-14Y 25mm \$795 | H Pave Diamond Safety Pin Push Lock TM022694-14Y 22.5mm \$735 | I Plain Circle Push Lock TM022665-14Y 15mm \$456 | J Pave Diamond Circle Push Lock TM022696-14Y 15mm \$1,275 | K Organic Circle Push Lock TM022697-14Y 20mm \$930 | L Organic Diamond Circle Push Lock TM022695-14Y 20mm \$1,050 | M Pave Diamond Heart Push Lock TM022682-14Y 21mm \$1,440  
N Large Heart Push Lock TM022681-14Y 27mm \$795 | O Padlock Push Lock TM022666-14Y 17mm \$705  
P Diamond Bezel Square Push Lock TM022684-14Y 20mm \$915 | Q Diamond Baguette Square Push Lock TM022692-14Y 20mm \$948 | R Large Rectangle Push Lock TM022611-14Y 25mm \$465

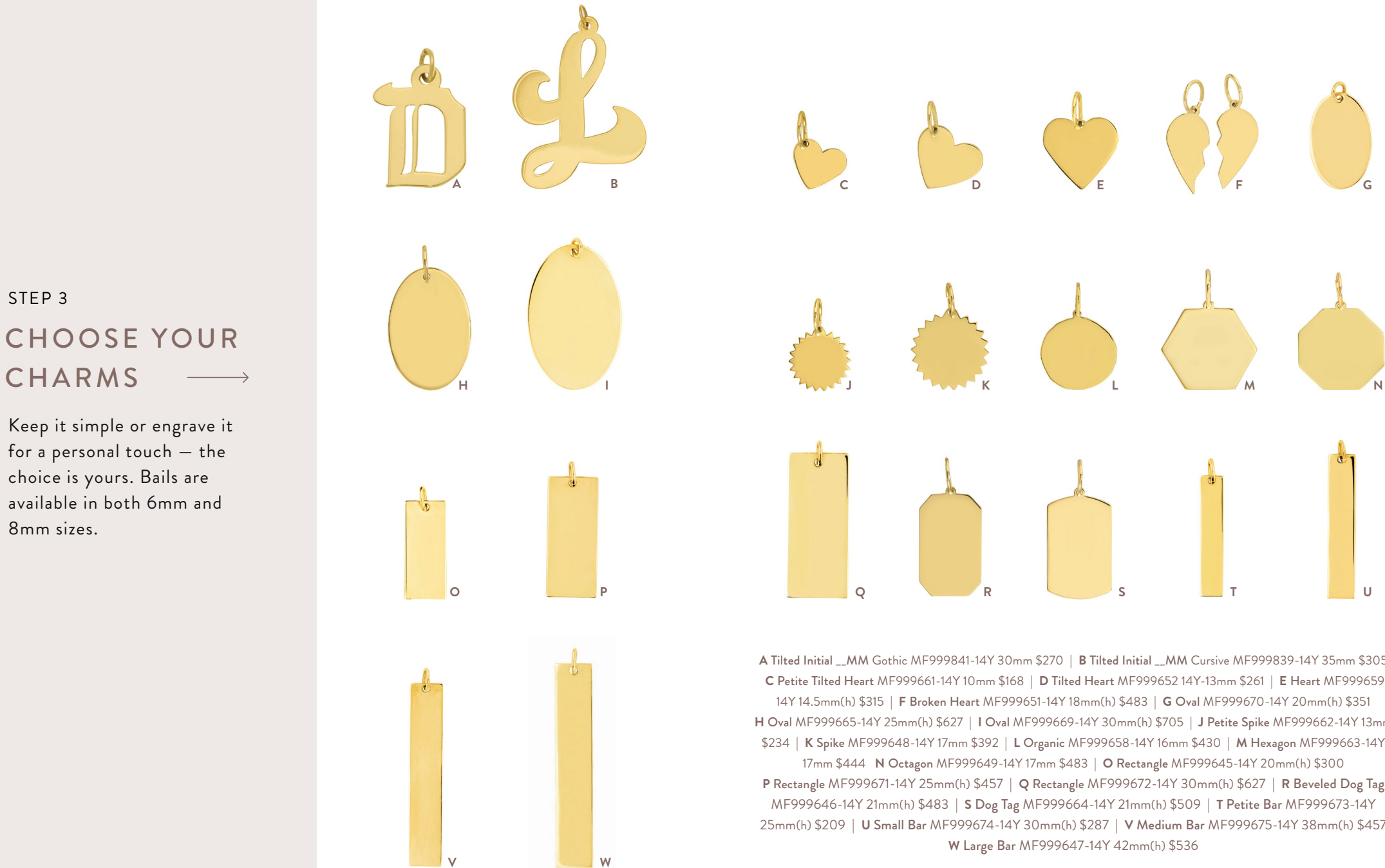




STEP 3

## CHOOSE YOUR CHARMS

Keep it simple or engrave it for a personal touch — the choice is yours. Bails are available in both 6mm and 8mm sizes.



**A** Tilted Initial \_\_MM Gothic MF999841-14Y 30mm \$270 | **B** Tilted Initial \_\_MM Cursive MF999839-14Y 35mm \$305  
**C** Petite Tilted Heart MF999661-14Y 10mm \$168 | **D** Tilted Heart MF999652 14Y-13mm \$261 | **E** Heart MF999659 14Y 14.5mm(h) \$315 | **F** Broken Heart MF999651-14Y 18mm(h) \$483 | **G** Oval MF999670-14Y 20mm(h) \$351  
**H** Oval MF999665-14Y 25mm(h) \$627 | **I** Oval MF999669-14Y 30mm(h) \$705 | **J** Petite Spike MF999662-14Y 13mm \$234 | **K** Spike MF999648-14Y 17mm \$392 | **L** Organic MF999658-14Y 16mm \$430 | **M** Hexagon MF999663-14Y 17mm \$444 | **N** Octagon MF999649-14Y 17mm \$483 | **O** Rectangle MF999645-14Y 20mm(h) \$300  
**P** Rectangle MF999671-14Y 25mm(h) \$457 | **Q** Rectangle MF999672-14Y 30mm(h) \$627 | **R** Beveled Dog Tag MF999646-14Y 21mm(h) \$483 | **S** Dog Tag MF999664-14Y 21mm(h) \$509 | **T** Petite Bar MF999673-14Y 25mm(h) \$209 | **U** Small Bar MF999674-14Y 30mm(h) \$287 | **V** Medium Bar MF999675-14Y 38mm(h) \$457  
**W** Large Bar MF999647-14Y 42mm(h) \$536









LOOK 1

# PUSHING THE LIMITS

GET THE LOOK ———>

Diamond Pave J Huggie Earring TM022605-14Y \$660

Polished Huggie Earring TM022137-14Y \$246

Diamond Pave Profile Stud Earring MF036321-14Y \$675

Saturn Beaded Cuff MF036198-14Y \$426

3 Plus 1 Paperclip Chain MF036299-14Y 20g 20" \$4,350

Paperclip Split Chain MZ011084-14Y 3.90mm 20" \$1,065

Organic Circle Push Lock TM022695-14Y \$1,050

Plain Circle Push Lock TM022697-14Y 15mm \$930

Large Pave Diamond Push Lock TM022612-14Y 25mm \$1,155

Large Polished Push Lock TM022615-14Y 25mm \$411

Pave Diamond Push Lock TM022696-14Y 15mm \$1,275



## PUSHING THE LIMITS | GET THE LOOK —>

Build a necklace by connecting your favorite Midas pushlocks.  
Change the order or add a charm for ever-evolving style!

1



Put your split chain necklace on

2



Link the pushlock through  
the one jump ring

3



Join the circle pushlock with  
the organic pushlock

4



Add the diamond pushlock

5



Add the medium pushlock

6



Attach your last pushlock to  
create your necklace



LOOK 2

# THAT'S A WRAP

GET THE LOOK ———>

Rolo Split Chain MF037790-14Y 3.80mm 20" \$1,560

Pave Diamond Circle Push Lock TM022696-14Y 15mm \$1,275

Organic Diamond Circle Push Lock TM022695-14Y 20mm \$1,050

Sunburst Charm MF037777-14Y 20mm \$757



## THAT'S A WRAP | GET THE LOOK —>

Who says that an 20" chain is just for your neck? Flip for a new wrap-around look that gives you instant layering.

1



Attach the diamond pushlock through both jump rings

2



Wrap the split chain around your wrist

3



Hook the organic diamond pushlock

4



Add your charm

5



Lock the organic pushlock through the diamond pushlock

6



Take a photo of yours and tag us! @midaschain





LOOK 3

# CROSS MY HEART

GET THE LOOK ———>

Diamond Cut Bead Chain Choker MF037043-14Y \$1,012

Rolo Split Chain MF037790-14Y 3.80mm 20" \$1,560

Pave Diamond Heart Push Lock TM022682-14Y 21mm \$1,440

Petite Spike Charm MF999662-14Y 13mm \$235



## CROSS MY HEART | GET THE LOOK —→

Show the world who holds your heart with a sweetly simple look of just one pushlock and one charm. 1+1=LOVE.

1



Place the split chain  
around your neck

2



Join the heart pushlock  
through one jump ring

3



Slide your charm  
through the pushlock

4



Link the heart pushlock through  
the other jump ring







# INDEX

## FRONT COVER

**From Left to Right, Top to Bottom:** 3+1 Paper Clip MF036696-14Y 5.10mm 20” \$2,130 | Paper Clip Chain Bar Choker MF037711-14Y 11.05g 16” \$2,400 | Paper Clip Split Chain MF037792-14Y 5mm 20” \$1,905 | Pave Diamond Circle Push Lock TM022696-14Y 15mm \$1,275 | Signet Ring TM022079-14Y \$654 | Paper Clip Split Chain MZ011106-14Y 3.90mm 20” \$1,185 | Four Diamond Bezel Push Lock TM022613-14Y 25mm \$795

## PAGE 4-5

**From Left to Right:** Paper Clip Split Chain MZ011084-14Y 3.90mm 20” \$1,065 | Mini Diamond Push Lock TM022683-14Y \$420 | Padlock Push Lock TM022666-14Y \$705

## PAGE 6-7, 8-9

**From Left to Right, Top Row to Bottom:** Paper Clip Split Chain MF037792-14Y 5mm 20” \$1,905 | Paper Clip Split Chain MZ011084-14Y 3.90mm 20” \$1,065 | Paper Clip Split Chain MZ011106-14Y 3.90mm 20” \$1,185 | Rolo Split Chain MF037790-14Y 3.80mm 20” \$1,560

## PAGE 10-11

**From Left to Right, Top Row to Bottom:** Pave Diamond Mini Push Lock TM022683-14Y 11mm \$420 | Mini Polished Push Lock TM022667-14Y 11mm \$150 | Medium Polished Push Lock TM022614-14Y 16mm \$207 | Large Polished Push Lock TM022615-14Y 25mm \$411 | Large Pave Diamond Push Lock TM022612-14Y 25mm \$1,155 | Single Diamond Bezel Push Lock TM022693-14Y 25mm \$675 | Four Diamond Bezel Push Lock TM022613-14Y 25mm \$795 | Pave Diamond Safety Pin Push Lock TM022694-14Y 22.5mm \$735 | Plain Circle Push Lock TM022665-14Y 15mm \$456 | Pave Diamond Circle Push Lock TM022696-14Y 15mm \$1,275 | Organic Circle Push Lock TM022697-14Y 20mm \$930 | Organic Diamond Circle Push Lock TM022695-14Y 20mm \$1,050 | Pave Diamond Heart Push Lock TM022682-14Y 21mm \$1,440 | Large Heart Push Lock TM022681-14Y 27mm \$795 | Padlock Push Lock TM022666-14Y 17mm \$705 | Diamond Bezel Square Push Lock TM022684-14Y 20mm \$915 | Diamond Baguette Square Push Lock TM022692-14Y 20mm \$948 | Large Rectangle Push Lock TM022611-14Y 25mm \$465

## PAGE 12-13

**From Left to Right, Top Row to Bottom:** Organic Diamond Circle Push Lock TM022695-14Y 20mm \$1,050 | Pave Diamond Circle Push Lock TM022696-14Y 15mm \$1,275 | Plain Circle Push Lock TM022665-14Y 15mm \$456

## PAGE 14-15

**From Left to Right, Top Row to Bottom:** Tilted Initial \_\_MM Gothic MF999841-14Y 30mm \$270 | Tilted Initial \_\_MM Cursive MF999839-14Y 35mm \$305 | Petite Tilted Heart MF999661-14Y 10mm \$168 | Tilted Heart MF999652-14Y 13mm \$261 | Heart MF999659-14Y 14.5mm(h) \$315 | Broken Heart MF999651-14Y 18mm(h) \$483 | Oval MF999670-14Y 20mm(h) \$351 | Oval MF999665-14Y 25mm(h) \$627 | Oval MF999669-14Y 30mm(h) \$705

BASED ON \$2,000 GOLD MARKET ⓘ

## PAGE 14-15 CONTINUED

Petite Spike MF999662-14Y 13mm \$234 | Spike MF999648-14Y 17mm \$392 | Organic MF999658-14Y 16mm \$430 | Hexagon MF999663-14Y 17mm \$444 | Octagon MF999649-14Y 17mm \$483 | Rectangle MF999645-14Y 20mm(h) \$300 | Rectangle MF999671-14Y 25mm(h) \$457 | Rectangle MF999672-14Y 30mm(h) \$627 | Beveled Dog Tag MF999646-14Y 21mm(h) \$483 | Dog Tag MF999664-14Y 21mm(h) \$509 | Petite Bar MF999673-14Y 25mm(h) \$209 | U Small Bar MF999674-14Y 30mm(h) \$287 | Medium Bar MF999675-14Y 38mm(h) \$457 | Large Bar MF999647-14Y 42mm(h) \$536

## PAGE 16-17

**From Left to Right, Top Row to Bottom:** Dog Tag MF999664-14Y 21mm(h) \$498 | Circle Cutout MF999657-14Y 18mm \$396 | Spike MF999648-14Y 17mm \$384 | Hexagon MF999663-14Y 17mm \$435

## PAGE 18-19, 20-21

**From Left to Right, Top Row to Bottom:** Diamond Pave J Huggie Earring TM022605-14Y \$660 | Polished Huggie Earring TM022137-14Y \$246 | Diamond Pave Profile Stud Earring MF036321-14Y \$675 | Saturn Beaded Cuff MF036198-14Y \$426 | 3 Plus 1 Paper Clip Chain MF036299-14Y 20g 20” \$4,350 | Paper Clip Split Chain MZ011084-14Y 3.90mm 20” \$1,065 | Organic Circle Push Lock TM022695-14Y \$1,050 | Plain Circle Push Lock TM022697-14Y 15mm \$930 | Large Pave Diamond Push Lock TM022612-14Y 25mm \$1,155 | Large Polished Push Lock TM022615 14Y 25mm \$411 | Pave Diamond Push Lock TM022696-14Y 15mm \$1,275

## PAGE 22-23, 24-25

**From Left to Right, Top Row to Bottom:** Rolo Split Chain MF037790-14Y 3.80mm 20” \$1,560 | Pave Diamond Circle Push Lock TM022696-14Y 15mm \$1,275 | Organic Diamond Circle Push Lock TM022695-14Y 20mm \$1,050 | Sunburst Charm MF037777-14Y 20mm \$757

## PAGE 26-27

**From Top to Bottom:** Diamond Cut Bead Chain Choker MF037043-14Y \$1,012 | Rolo Split Chain MF037790-14Y 3.80mm 20” \$1,560 | Pave Diamond Heart Push Lock TM022682-14Y 21mm \$1,440 | Petite Spike Charm MF999662-14Y 13mm \$235

## PAGE 30-31

**From Left to Right:** Paper Clip Split Chain MZ011084-14Y 3.90mm 20” \$1,065 | Diamond Bezel Square Push Lock TM022684-14Y 20mm \$915 | Paperclip Split Chain MF037790-14Y \$1,560 | Diamond Baguette Square Push Lock TM022692-14Y 20mm \$948

## PAGE 34

**From Top to Bottom:** Paper Clip Split Chain MZ011106-14Y 3.90mm 20” \$1,185 | Large Pave Diamond Push Lock TM022612-14Y 25mm \$1,155

BASED ON \$2,000 GOLD MARKET ⓘ



151 Veterans Drive  
Northvale, NJ 07647

---

[midaschain.com](http://midaschain.com)  
201.244.1150

MIDAS



MIDAS  
151 Veterans Drive  
Northvale, NJ 07647

PRSRT STD  
US POSTAGE PAID  
PARAMUS, NJ  
PERMIT NO.87

OR CURRENT RESIDENT